



DO YOU KNOW THE RULES

An Interactive Look at the why's, when's and how's of USA Softball Rules



What is the purpose of the rules?

- Level Playing Field for Team A vs. Team B
- Competitive Balance between offense and defense
- Uniform playing conditions
- Standard for all game equipment
- Guidelines for player participation
- Safety precautions for all participants



How do we interpret rules?

Does the play fall within a definition in Rule 1?

Is the play addressed in the body of the Rules?

How does the play relate to the intent of the Rule?

How do we consider the “gray” with the rule and the intent of the rule?



Intent of the Rules

- Pitching Rules
- Batting Rules
- Baserunning Rules
- Fielding Rules
- Lineup Rules



How do we change a Rule?

- Must be submitted by Council Member
 - Is it new, addition, modification?
 - What game(s) does it apply to?
 - What is the proposal?
 - Rationale for change?
- Must Pass Playing Rules Committee or be approved by entire council to be voted upon
- Must Pass Full Council with 60% Approval



How to Teach and Learn the Rules

- Sitting around between games
- Rule luncheons or dinners
- Daily reading schedule
- Umpire meetings
- Role play
- Impromptu Zoom/Teams meetings
- Tests (online & in-person)
- Homework
- Video's
- Games
- Technology

When Discussing Rules - Know Your Audience

Fast Pitch - Landing Outside 24" Pitcher's Plate



Fast Pitch – Replanting the Push Foot



Fast Pitch – Rocking Motion



Fast Pitch – Hands Never Touch



Fast Pitch – Leaping?



Batter Interference



Batter Interference with throw from Catcher



Possible Interference or Obstruction at 1B



Possible Obstruction/Interference by R1 with F6



Possible Interference by R1 with F6



Interference by R1 with F6 – Delayed Call



Ball Deflects off Runner on Throw



Ball Deflected Off F1-Interference Rule



Possible Interference R1 to F6



Ball Rolls Down F6 Arm then Secured in Right Hand



Slow Pitch - Strike 3 - Ball Landing in Front of Plate



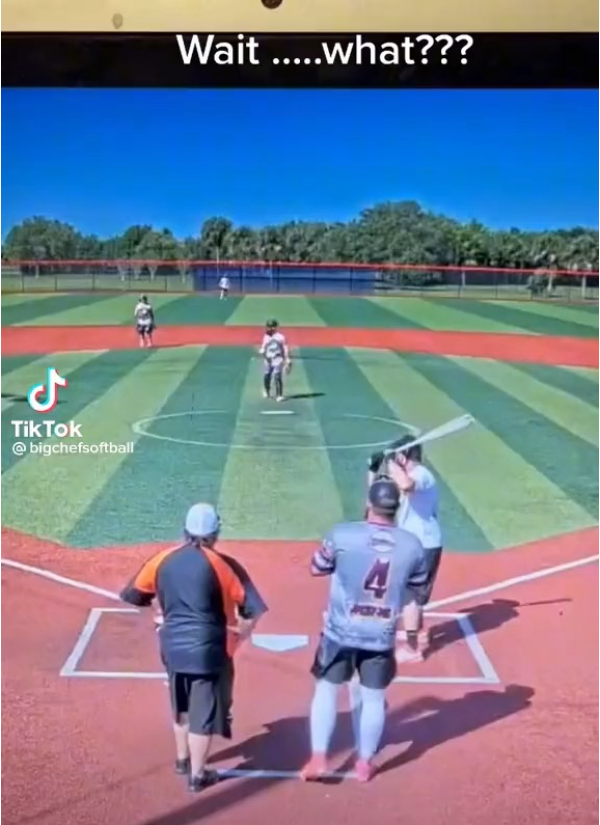
Slow Pitch – Legal or Illegal



Slow Pitch – Legal or Illegal



Slow Pitch – Legal or Illegal Pitch



Delayed Foul Ball



Slow Pitch - What is the Rule?



R2 from 2B Missed 3B





Learn the Rules

Test your
Knowledge



Knowledge Questions

1. Which of the following is not a blocked ball?
 - A. Errant throw picked up by on deck batter
 - B. A ball held by a defender who loses control of the ball out of play
 - C. Overthrown ball that hits bats discarded by on deck batter
 - D. Pitched ball picked up by a bat boy
 -

2. Which of the following is a characteristic of the official foul pole?
 - A. Must be painted white or optic yellow
 - B. Must be at least 15 feet above the fence
 - C. May have mesh material extending to the fair side
 - D. None of the above
 - E. All of the above



Knowledge Questions

3. Which of the following is not a requirement of a team's uniform?
 - A. A 3 inch or larger number on the back of a jersey
 - B. Jersey numbers may be outlined in a contrasting color
 - C. Shoes
 - D. None of the above
-
4. Which of the following is not true about the shorthanded rule?
 - A. A team may play shorthanded when there is no substitute for a disqualified player
 - B. A player removed from a game for injury may not return to the game
 - C. A player removed from a game for violation of the blood rule may not return to the game
 - D. The shorthanded rule applies to the COED game



Knowledge Questions

5. R1 @3B, R2 @2B, R3 @1B, with two outs. B4 gets a base hit that scores R1,R2 and R3. R3 missed 2nd base. B4 is thrown out at 3B for the 3rd out. R3 is called out on a proper appeal of missing 2B. How many runs score?
- A. 0
 - B. 1
 - C. 2
 - D. 3
-
6. Which of the following is not a requirement in the preliminaries or delivery in all games of Fast and Slow Pitch?
- A. The catcher must be in the catcher's box prior to delivery of a pitch
 - B. The pitcher must take a position with one or both feet in contact with the pitching plate
 - C. The pitcher shall not make any motion to pitch without delivering the ball to the batter
 - D. The pitcher cannot make a reversal of the pitching motion



Knowledge Questions

7. R1 is on 3B with two outs B5 is due to bat but B8 bats and gets a hit that scores R1. The batting out of order is not detected until a pitch has been made to B10 who followed B8. The defensive team appeals B8 for hitting out of turn. The umpire shall:
- A. Rule B8 out for batting out of order for the 3rd out. Run is not allowed.
 - B. Put B6 in the batter's box assuming the count of B10
 - C. Rule B8 out for batting out of order, and put B9 in the batter's box
 - D. Put B9 in the batter's box assuming the count of B10
8. Which of the following is not an exception for an obstructed runner being called out between the two bases where obstructed.
- A. Violating the look back rule
 - B. Interfering with a fielder making a play
 - C. Passing another runner
 - D. Leaving early on a caught fly ball



Knowledge Questions

9. Which of the following cannot be protested?
- A. The award given for an illegal pitch
 - B. The result of the play following the umpire giving the incorrect number of outs
 - C. The number of runs allowed to score when the 3rd out is the result of the batter not reaching 1B.
 - D. The base award given for a ball thrown out of play
-
10. When is the PU not allowed to give the BU additional information to reverse a ruling on a play?
- A. When the manager requests a reversal due to a misapplied rule
 - B. When a player requests a reversal due to a misapplied rule
 - C. When the BU asks the PU for help with a swipe tag
 - D. When the BU asks the PU for help with a running lane violation.



Knowledge Questions

11. Which of the following statements is not true regarding the three-foot lane?

- A. The batter-runner may run outside the lane to avoid a fielder attempting to field a batted ball
- B. If the fielder takes the foul portion of the double base the BR may run in fair territory if the ball is on the foul side of 1B
- C. In order to have interference it doesn't have to be intentional, and the throw doesn't have to hit the BR
- D. Anytime a runner is not in the 3-foot lane and is hit with a throw from a fielder it is interference.

•

12. Which statement is not true about base awards?

- A. All base awards are based on position of runners at the time of the pitch
- B. There are 1,2,3 and 4 base awards
- C. The base award for all thrown balls is two bases
- D. The base award for all pitched balls is one base



Questions

